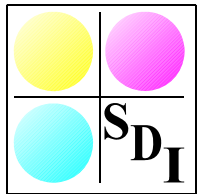


SDI Editor APS[®] (Now with Movie & PowerPoint O/P)

Streamline your desktop graphics workflow

www.sdicgm.com



SDI Editor APS is an efficient, comprehensive and unified graphics application to simplify and streamline your desktop graphics workflow. Key features include the ability to Capture, View, Edit, Mark-up, Montage, Convert, Export and Print numerous Vector and Raster files types, and also supports the creation of PowerPoint presentation slides and movie sequences.

- Support is provide for all major G&G/Petrophysical applications
- File types supported: CGM, CGM+, CGM*PIP, CGMz, BMP, CALS, DWG, DXF, EMF, HPGL, ICO, JPEG, NETPM, PDF, PDS, PNG, PPT, PS, TIFF and XWD.
- Movie sequences may be exported as AVI, FLV, MP4, MPG, MOV, or WMV.
- SDI Editor **APS** enables you to create Montages, Movies, PDF's and PowerPoint (PPT) slides.
- The Active Printing Solution (**APS**) utilises SDI's proven printer drivers for more reliable printing, without the shortcomings of the standard Windows drivers. All commonly used large format plotters and desktop printers are supported, and use the same comprehensive, intuitive and reliable user interface.
- Vector data maintained for full scalability, direct editing and highest quality output.
- The entire display or a selected portion may be exported to a wide range of vector and raster formats. PPT slides may also be exported as vector or raster files.
- Template files are economical in size, and provide the means to ensure consistency in presentations as well as rapid recovery and updating of previous work.
- Auto backup ensures work is regularly saved at user specified intervals.
- Concatenate multi-page files, such as well logs, into a gapless single page.
- Unicode multi-lingual support. Annotate and print in your local language.
- Pattern and symbol support, with editor.
- Multiple layers can be defined so that different data classifications or changes made by individual reviewers can be kept separate.
- Format conversion: files may be converted from one format to another by simply importing and exporting any of the supported formats.
- List CGM elements and an object filter, to assist in analysing files.

The one desktop tool you need

The screenshot displays the SDI Editor APS interface. The main window shows a seismic image with a color scale on the right. Overlaid on this are several dialog boxes: 'SDI Multi-Capture Options' (with 'Export Movie' button), 'Export' (with 'PowerPoint Support' button), and 'SDI APS - Print V0.L51' (with 'Active Printing Solution - APS' button). The print dialog shows printer settings for an HP DesignJet 1055CM and paper size [APS ROLL 36in (914mm)].

Drawing/Editing Toolbar

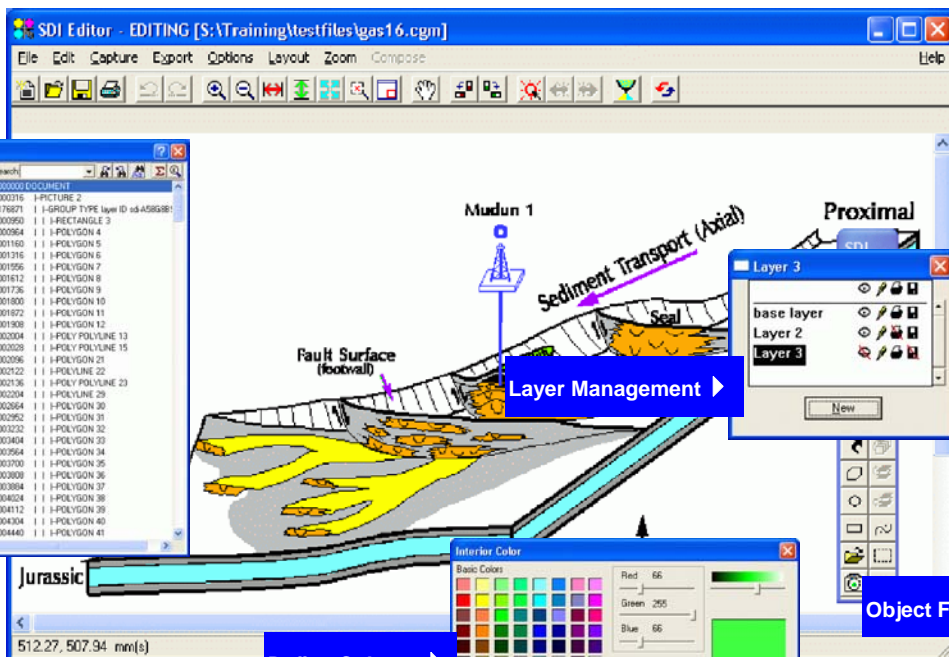


- | | | | | | | | | | | | | | | | | | | | | | | |
|----|-------------------|---|---|---|---|---|---|-----|------------------------|----|----|----|----|-----|------------------------------|----|----|----|----|----|----|----|
| 1 | 2 | 3 | 4 | 5 | 6 | 7 | 8 | 9 | 10 | 11 | 12 | 13 | 14 | 15 | 16 | 17 | 18 | 19 | 20 | 21 | 22 | 23 |
| 1. | Place Text | | | | | | | 9. | Place Bezier Line | | | | | 17. | Move Object to Front | | | | | | | |
| 2. | Place Boxed Text | | | | | | | 10. | Place Polygon | | | | | 18. | Move Object to Back | | | | | | | |
| 3. | Place Leader Line | | | | | | | 11. | Place Ellipse | | | | | 19. | Move Object One Level Up | | | | | | | |
| 4. | Place Line | | | | | | | 12. | Place Rectangle | | | | | 20. | Move Object One Level Back | | | | | | | |
| 5. | Place Polyline | | | | | | | 13. | Place Symbol | | | | | 21. | Insert Graphic (Add files) | | | | | | | |
| 6. | Place Arc | | | | | | | 14. | Create/Modify Hot Spot | | | | | 22. | Select Group (Group editing) | | | | | | | |
| 7. | Place Sweep Arrow | | | | | | | 15. | Rotate Object | | | | | 23. | Capture Rectangle | | | | | | | |
| 8. | | | | | | | | 16. | Delete Object | | | | | | | | | | | | | |

Standard Toolbar



- | | | | | | | | | | | | | | | | | | | | | |
|----|----------------|---|---|---|---|---|---|-----|---------------|----|----|----|-----|---------------|----|----|----|----|----|----|
| 1 | 2 | 3 | 4 | 5 | 6 | 7 | 8 | 9 | 10 | 11 | 12 | 13 | 14 | 15 | 16 | 17 | 18 | 19 | 20 | 21 |
| 1. | New Drawing | | | | | | | 9. | Fit to Width | | | | 17. | Show Hotspots | | | | | | |
| 2. | Open | | | | | | | 10. | Fit to Height | | | | 18. | Back | | | | | | |
| 3. | Save | | | | | | | 11. | Best Fit | | | | 19. | Forward | | | | | | |
| 4. | Print the file | | | | | | | 12. | Detail View | | | | 20. | Object Filter | | | | | | |
| 5. | Undo | | | | | | | 13. | Overview | | | | 21. | Refresh | | | | | | |
| 6. | Redo | | | | | | | 14. | Pan Mode | | | | | | | | | | | |
| 7. | Zoom In | | | | | | | 15. | Rotate Left | | | | | | | | | | | |
| 8. | Zoom Out | | | | | | | 16. | Rotate Right | | | | | | | | | | | |



List CGM Elements ▶

Layer Management ▶

Define Colours ▶

Object Filter ▶



Specifications:

- CGM Versions/Certification: CGM versions 1, 2, 3 and 4 / NIST certified
- CGM Profiles: ATA, CALS, CGM+, CGM*PIP, J-2008 and WebCGM
- Operating Environments: MS Windows (32-bit and 64-bit): 2000, XP, Vista, Windows 7
- Standard Input Formats: CGM, CGM+, CGM*PIP, PDF, PS, DWG/DXF, EMF/WMF, HPGL, GIF, TIFF, JPEG, PNG, BMP, CALS, and ICO,
- Standard Output Formats: CGM, CGM+, CGM*PIP, PDF, PS, SVG, DWG/DXF, PPT, EMF, TIFF, JPEG, PNG and BMP.
- Movie Output Formats: AVI, FLV, MP4, MPG, MOV and WMV

System Development, Inc. - SDI		
SDI - UK	SDI - USA	SDI - China
Tel: +44 1732 369988	Tel: +1 713 266 5667	Tel: +86 10 - 5877 - 2166
Fax: +44 8700 526967	Fax: +1 713 974 4911	Fax: +86 10 - 5877 - 2168
E-mail: sales@sdiuk.com	E-mail: sales@sdicgm.com	E-mail: sdiprc@sdicgm.com

