

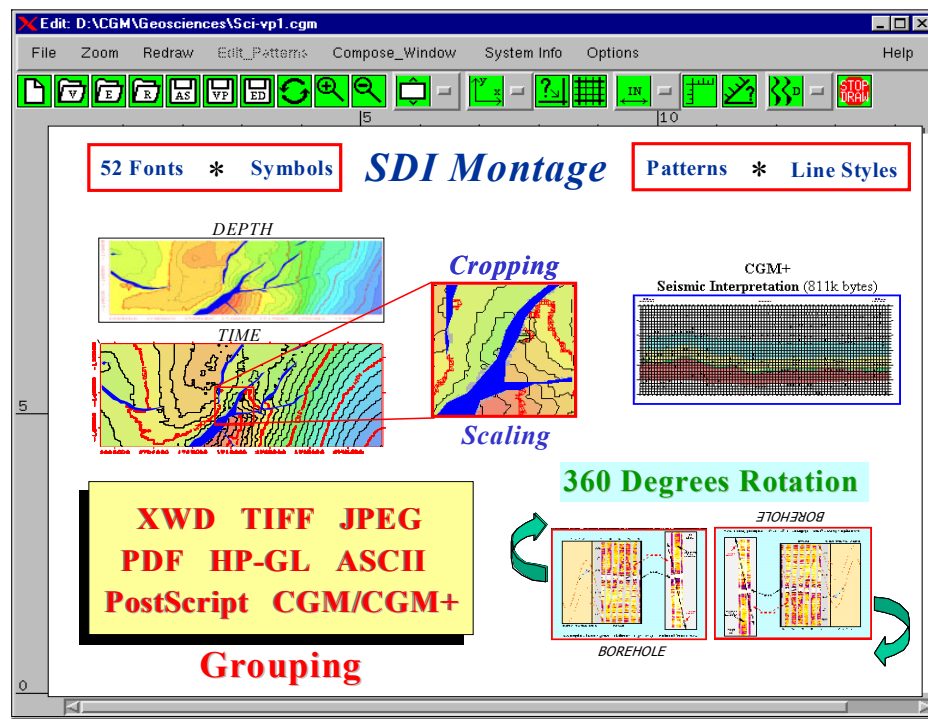


SDI Montage

SDI Montage is a publishing tool for UNIX desktops.

Geo Professionals use a wide variety of applications to analyze geophysical, geological, and geographical data. Upon completion of your analysis project, you are faced with the task of presenting your various graphics images in a single display. SDI Montage gives you the ability to import multiple graphic pictures of various formats into a single comprehensive display file for printing and viewing.

Combine your graphic data into a powerful display.



Creating “professional quality” displays are extremely quick and easy with Montage. SDI includes an extensive publishing tool set for markup, text editing, fonts, symbols, cropping, scaling, and layout to “dress up” your display for business meetings, poster sessions, and technical presentations.

SDI Montage offers an optional graphics primitive editor for Geo Professionals, who need to add change or remove graphical elements in a CGM file. Enhancing line weights, removing odd text, and deleting rogue graphic elements for pre-publishing clean up are typical applications for the Edit option.

Contact SDI for an evaluation



SalesUS@sdicgm.com
1 713-266-5667



SalesUK@sdicgm.com
+011 44-1732-369988



sdbj@sina.com
+011 86 10-8200-5004

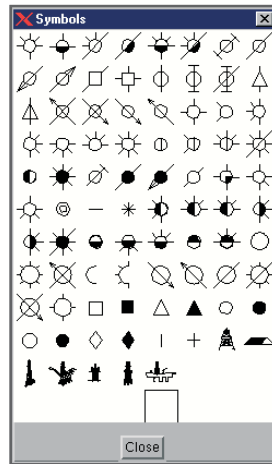
Markup and Highlight Tools

Add shapes, lines, symbols, colors, patterns and text to your display

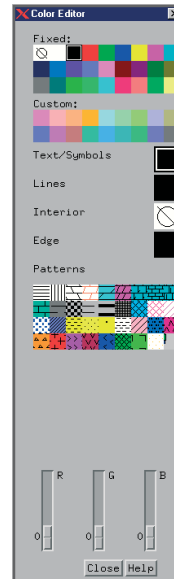
Draw Editor



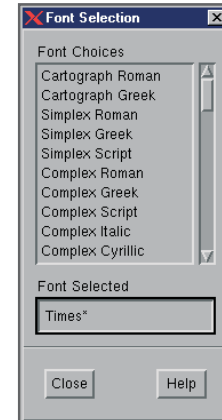
Petroleum Symbols



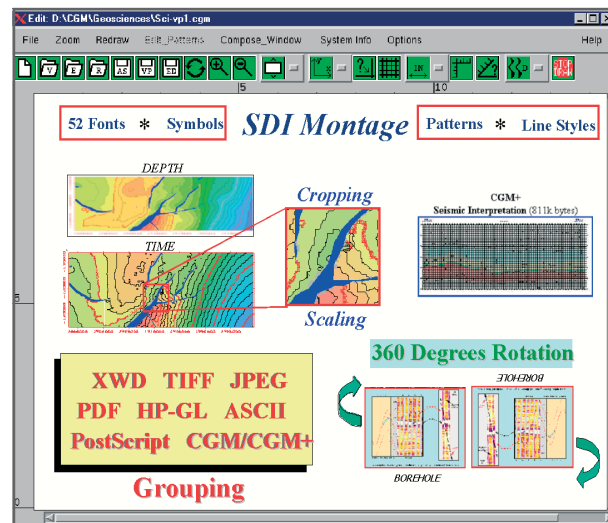
Color Editor



*** 52 Adobe & CGM PIP Fonts.**



File Layout and Manipulation Tools



- Position
- Rotate
- Scale by %
- Crop

- Auto Align
- Reference Point Align
- Group objects

Import Options: Postscript, PDF, TIFF, JPEG, RGB, XWD, ASCII,

Export Options: Postscript, PNG, JPEG, TIFF, & XWD.

SDI Edit Option: Change primitive elements in a file.

Platforms: AIX, HP-UX, IRIX, LINUX, & SOLARIS.