

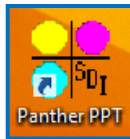
## Quick Start Guide

### Panther PPT

SDI Panther products make sharing information easier. Panther PPT combines and converts multiple files into a single, multi-slide Microsoft PowerPoint presentation. By utilizing Windows File Explorer, Panther PPT can convert files in as few as 3 mouse clicks.

### Launching Panther PPT

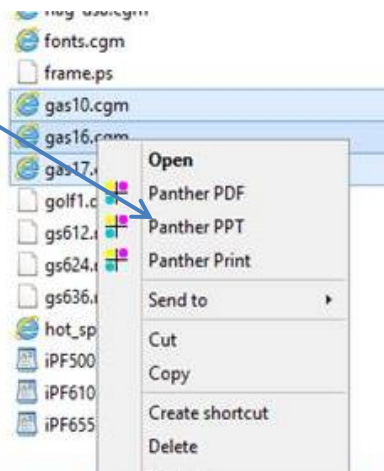
- Double click on Desktop icon



or



- Select a group of files in Windows File Explorer, right-click and select Panther PPT



### Add, remove or reorder files

- Select the file(s) that you want to modify, then use the following icons to perform the desired action:

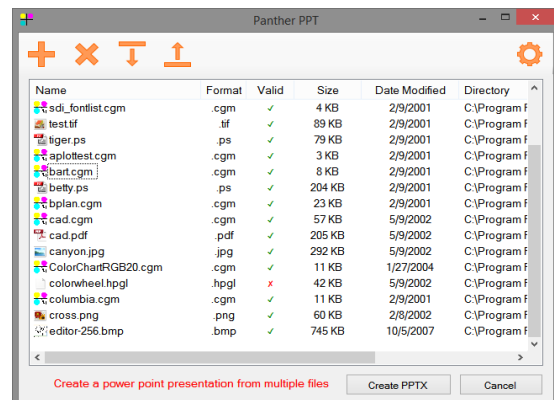
Add Files 

Remove Files 

Move Down 

Move Up 

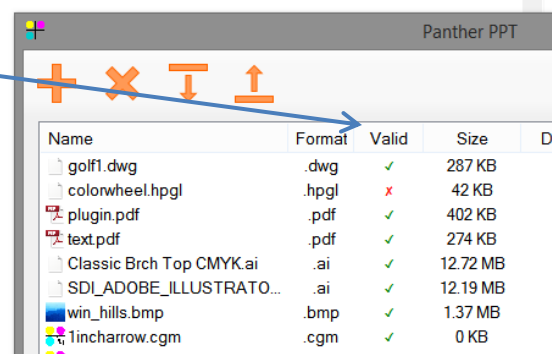
- Files can be also added by “drag and drop”



## File Properties


- Valid files display “✓” and invalid files display “✗” in the “Valid” column. Invalid files will not convert to a PPT slide
- In addition to indicating the file validity to convert, Panther PPT displays file name, format, size, date modified and location directory.

*File Formats Supported:* CGM, PDF, EMF, SVG, PostScript, DWG/DXF, AI, TIFF, JPEG, PNG, GIF, HTML, TXT, RTF and Microsoft Word™ file formats

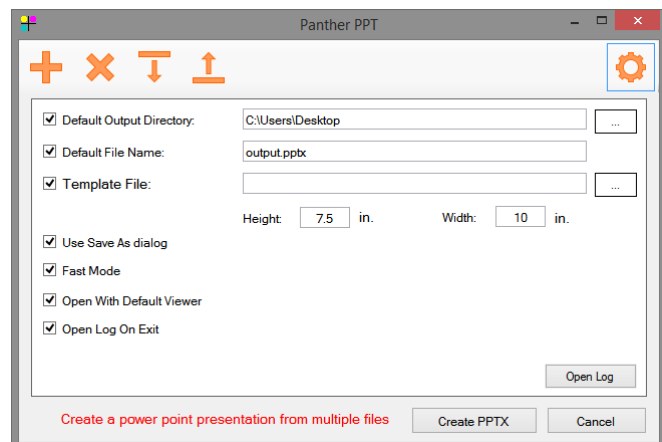


Name	Format	Valid	Size	D
golf1.dwg	.dwg	✓	287 KB	
colorwheel.hpgl	.hpgl	✗	42 KB	
plugin.pdf	.pdf	✓	402 KB	
text.pdf	.pdf	✓	274 KB	
Classic Brch Top CMYK.ai	.ai	✓	12.72 MB	
SDI_ADOBE_ILLUSTRATO...	.ai	✓	12.19 MB	
win_hills.bmp	.bmp	✓	1.37 MB	
1incharrow.cgm	.cgm	✓	0 KB	

## Settings

To access and change the settings, click on the icon 

- Default Output Directory:** Sets a default location on your computer or network to save output file
- Default File Name:** Sets a user defined name for output files
- Template File:** Allows users to use a company predefined template for all presentation slides
- Use Save As Dialog:** Prompts “Save As Dialog” to create output file name and location
- Fast Mode:** This mode convert files without prompting users with the Panther PDF dialog, 3 clicks is all it takes. It is recommended to check and set *Default Output Directory* and *Default File Name* or *Save As Dialog*
- Open With Default Viewer:** After creating a PDF file, it will open with the default PDF viewer
- Open Log On Exit:** Select this option to view error messages



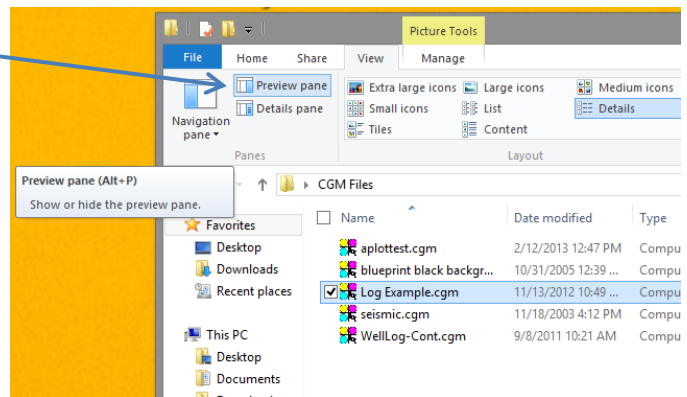
## Panther View

Panther View is a preview tool included in all Panther products. It allows users to view, pan, rotate and zoom CGM files in the preview pane of Windows File Explorer.

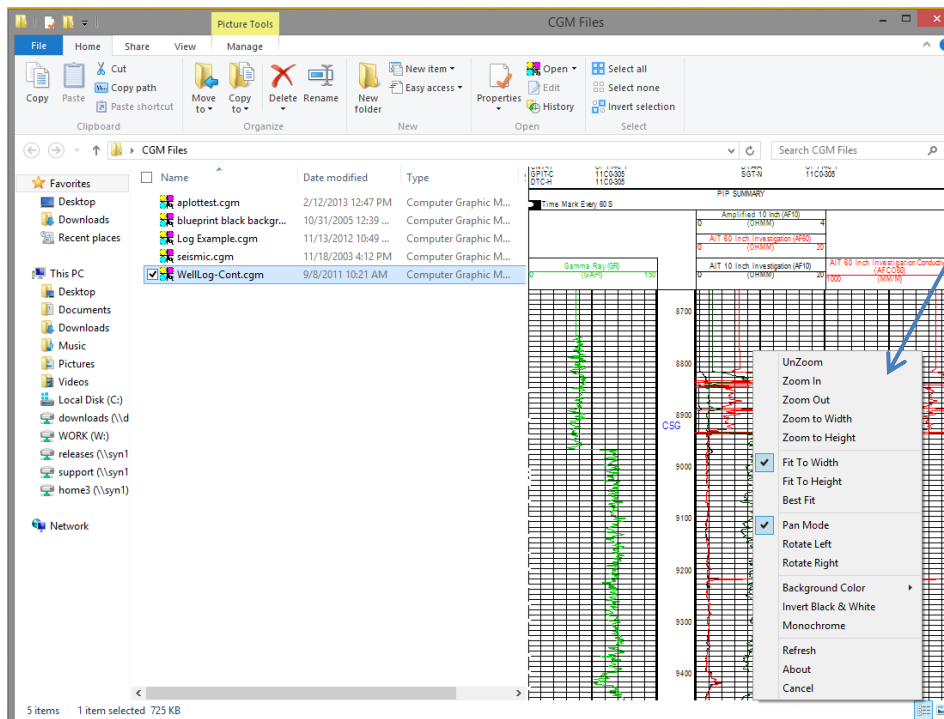
## Getting Started

Once Panther View is installed, follow the steps below to view CGM Graphics in Windows Explorer.

1. Open a Windows Explorer window
2. Under the View tab, select Preview pane
3. After setting the preview pane, select a CGM file on your Windows File Explorer window, the preview pane will show the CGM file on the right side.



## Options



Right-click on the preview pane to view available options and interact with the CGM file

### Support Contact:

Email: [support@sdicgm.com](mailto:support@sdicgm.com)

Phone: +1 866 658 7527

Web: [www.sdicgm.com](http://www.sdicgm.com)