

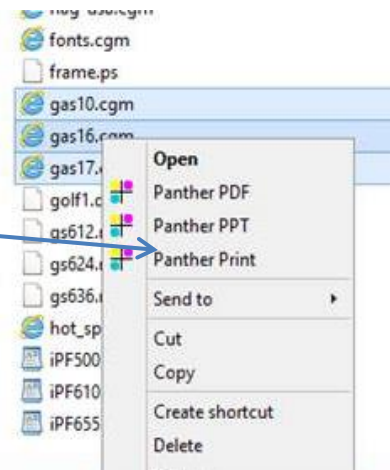
Quick Start Guide

Panther Print

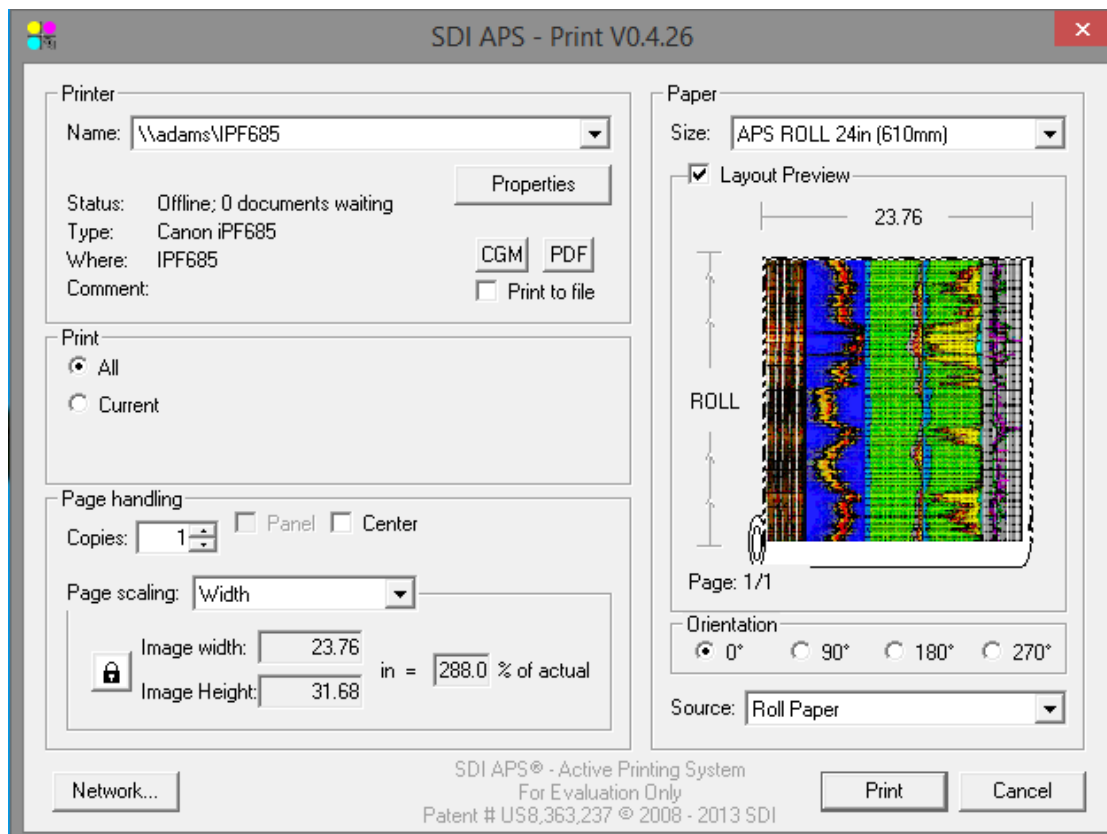
SDI Panther products make sharing information easier. Panther Print is an intuitive dialog box that provides a thumbnail view of the file to print, depicting orientation and scaling relative to the selected page or roll size for true WYSIWYG. By utilizing Windows File Explorer, Panther Print can print files in as few as 3 mouse clicks.

Launching Panther Print

- Select a single or a group of files in Windows File Explorer, right-click and select Panther Print



User Interface



Interface Details

Printer selection:
Local or network

CGM and PDF export*
*upgrade not included in standard version

Media selection:
Plotters – Roll and Fanfold paper sizes
Printers – Page sizes

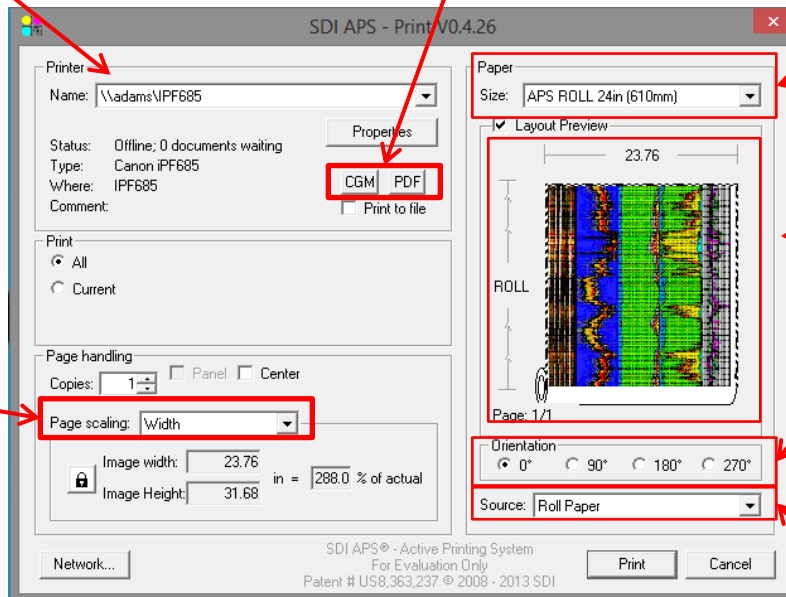
WYSIWYG thumbnail, it shows orientation and size relative to page/roll size

Orientation:
Plotters – 0, 90, 180, 270
Printers – Portrait/Landscape

Media source:
Shows paper media sources (if available) for the selected printer (e.g. roll 1, 2, 3, sheet tray, etc.)

Plotter Scaling:
- Fit to width
- Actual size
- User Specific/Ratio

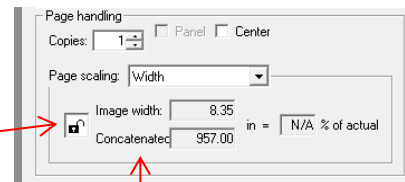
Printer Scaling:
- Fit to width
- Fit to height
- Actual size
- User Specific/ratio
- Best fit



Log Printing

Logs printed at actual size will maintain both width and height dimensions. When it comes to scaling the log files, Panther Print has the option to maintain the log height regardless of the width selected by the user.

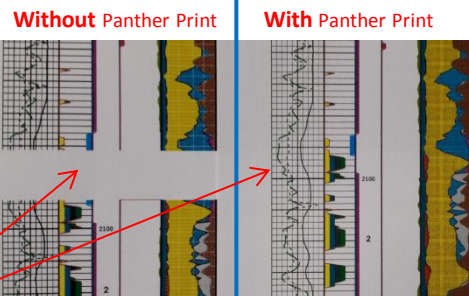
- Click on the Lock icon to “unlock” scaling
- Select “Width” to set to paper size width or “User Specific Size/Ratio” to set to user specifications
- If selected “Width” the concatenated size or log height will remain the same as the source file
- If selected “Specific Size/Ratio” the concatenated size or log height needs to be specified by the user



Concatenated Size
or
Log Height

Gapless Printing

Panther Print will continuously print pages when selecting any of the APS Rolls on the “Paper Size” section. For example, if you have a multipage PDF file, Panther Print will plot each page back to back to deliver a continuous plot.



Page Break

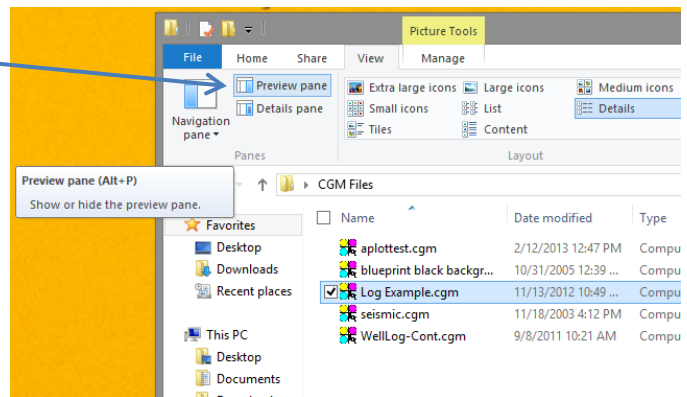
Panther View

Panther View is a preview tool included in all Panther products. It allows users to view, pan, rotate and zoom CGM files in the preview pane of Windows File Explorer.

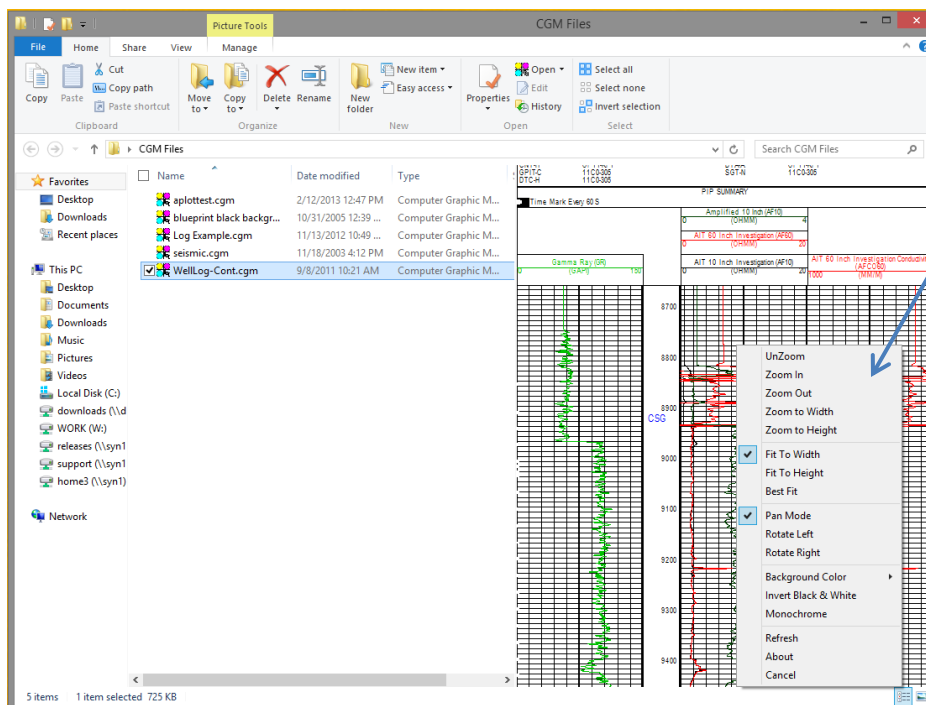
Getting Started

Once Panther View is installed, follow the steps below to view CGM Graphics in Windows Explorer.

1. Open a Windows Explorer window
2. Under the View tab, select Preview pane
3. After setting the preview pane, select a CGM file on your Windows File Explorer window, the preview pane will show the CGM file on the right side



Options



Right-click on the preview pane to view available options and interact with the CGM file

Support Contact:

Email: support@sdicgm.com

Phone: +1 866 658 7527

Web: www.sdicgm.com