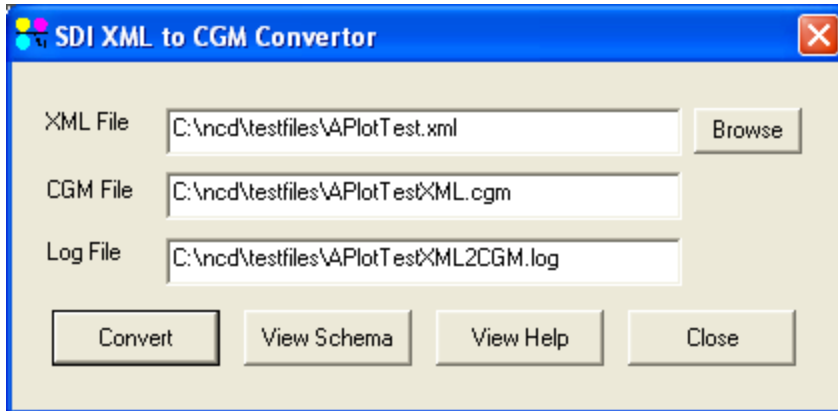


SDI_XML_CGM

GUI

This GUI is a simple user interface to the batch application which is designed for command line execution



Batch Interface

sdi_xml_cgm input_file output_file [options]

Options

-logfile[*file name*] Sets the name of the log file where error information and exit codes are recorded. If no log file is defined, all error codes and exit codes are printed to the console.

Example **-logfilexml_log.txt** Creates a file xml_log.txt and inserts the name and version of the application, and the current date. All error messages and exit codes are added to the file. If the log file exists the text is added to the end of the existing file.