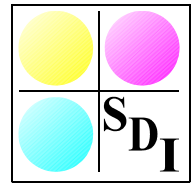


# SDI Convert

Multiple file format converter

www.sdicgm.com



**SDI Convert** reliably, quickly and easily converts your file formats – no matter what your business is.

The standard 2D graphics output from a wide range of applications are supported, such as:

- CAD** For users of EDS-PLM (UG & I-DEAS), PTC (ProE), Dassault (Catia) and other CAD packages that export CGM files, these can be converted to PostScript, PDF, TIFF, JPEG, EMF and PNG.
- Oil & Gas** In the Oil & Gas Exploration and Production sector, the CGM+ and CGM\*PIP profiles have for a long time been the de facto standard. However, SDI Convert can simply convert these input files to more universally accepted formats for use in reports, presentations, and websites.
- Web Design** For web masters and designers, SDI Convert provides the ideal tool for converting vector files (such as CGM, PostScript, DWG) to JPEG and PNG.

## Input Formats - Vector

- CGM Profiles: CALS, ATA, WebCGM, CGM+ & CGM\*PIP
- Adobe: PDF, PostScript
- EMF
- HPGL & HPGL/2

## Input Formats - Raster

- TIFF / TIF
- JPEG / JPG
- PNG

## Output Formats - Vector

- CGM: V1 & V3 Profiles: ATA, & CGM\*PIP
- Adobe: PDF, PostScript
- EMF
- SVG

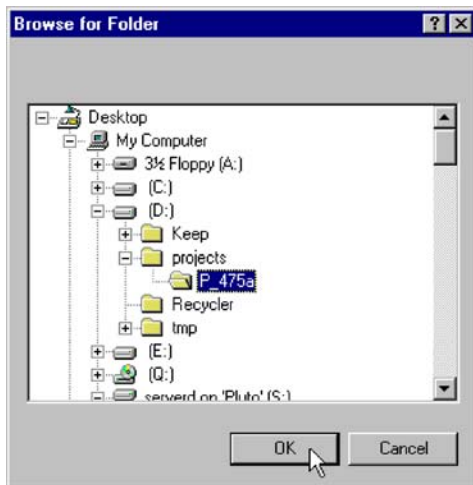
## Output Formats - Raster

- TIFF / TIF
- JPEG / JPG
- PNG

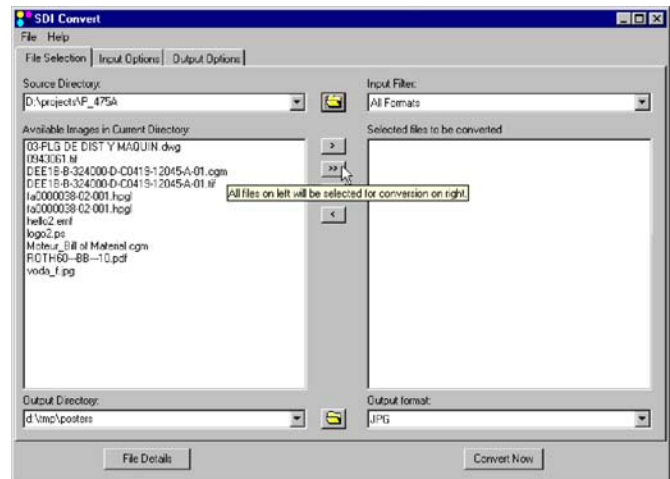
## Batch Conversion

SDI can also provide batch file format conversion tools, running either as a command-line option or as a server. These can easily be integrated within your own developed applications or utilised within documentation work-flow and archive systems, technical manuals, etc.

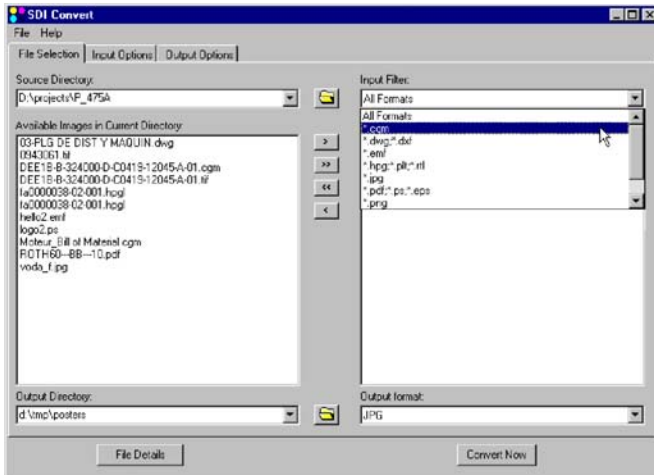
Contact SDI for more information and to arrange an evaluation.



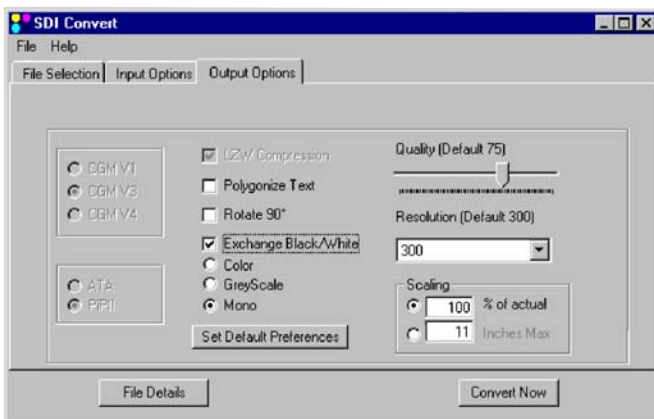
- ▲ **Select the Source Directory** - in this example d:\projects\P\_475a



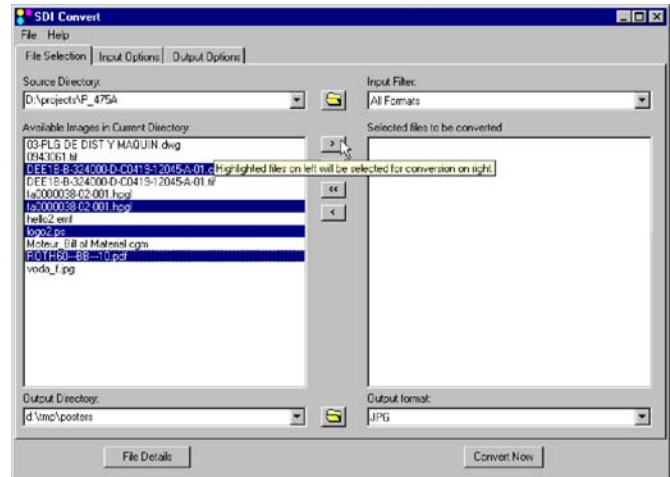
- ▲ **Input Filter** - is set at All Formats.
- Select input files** - in this case all files in this directory will be converted.
- Output Format** - in this case selected for JPG



Select individual files in a directory for conversion. ▶



◀ The drop-down on the Input Filter will enable you to select the file type you wish to convert.



#### ◀ Output options:

- CGM output V1 or V3, ATA or PIP11
- Colour, Greyscale or Mono
- Image Resolution (dpi)
- Compression
- Rotate 90°
- Scale
- Exchange Black/White
- Set Default Preferences

#### Tip - vector output from Windows applications

Install SDI PTF our MS Windows compatible printer driver that will create ANSI/ISO compliant, binary encoded CGM files.

Alternatively, set-up a printer such as an HP Color LaserJet 5 PS connected to FILE, and print from your application. This will create a PostScript file that can then be converted to CGM or EMF using SDI Convert, thereby maintaining the vector attributes.

Download SDI Convert for evaluation from <http://www.sdicgm.com/convertor.htm>

#### Minimum requirements:

Operating Environments: MS Windows NT 4.0, 2000, XP  
Memory: 64 Mb RAM

Processor: 133 MHz  
Disk space: Minimum 50 Mb - recommended 300+ Mb

#### System Development, Inc. - SDI

SDI - UK

7 Tonbridge Chambers, Pembury Rd.  
Tonbridge, Kent, TN9 2HZ  
Tel: +44 1732 369988  
Fax: +44 8700 526967

SDI - USA

11111 Richmond Ave.  
Houston, TX77082  
Tel: +1 713 266 5667  
Fax: +1 713 974 4911

SDI - China

Xingyuan International Apartment, 222  
Wangjing xiyuan Beijing  
Tel: +8610 6475 7653  
Fax: +86 10 6475-7553

