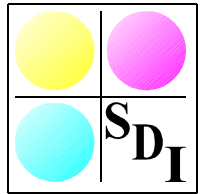


# SDI PDF Document Composer

Multi-page PDF output from UGS NX application [www.sdicgm.com](http://www.sdicgm.com)



**SDI PDF Document Composer** is a powerful conversion utility designed to simplify the generation of PDF graphic files directly from UGS NX part files.

Available in both integrated or stand-alone modes, it provides the user with a simple method of generating multiple documents or multi-page documents from single or multiple NX part files.

## Drawing Selection

**Source:** Either the current Display can be converted or, if applicable, any number of drawings within the part – select as appropriate.

**Scale:** Although each drawing may vary in size, all drawings can be included in a single, multi-page PDF document with varying page sizes. Alternatively, a custom page can be defined where each drawing will be scaled to fit the specified size. Portrait and Landscape orientation can be selected.

**Colour:** use the Colours option menu to specify the colours that are recorded in CGM files generated for plotting

- **As Displayed:** The colours used to display the geometry on screen are also recorded in the CGM file generated for plotting.
- **Part Colour:** The colours in the part colour table are used for printing.
- **Custom Palette:** You can use an alternate set of 216 colours for printed output. When you select Custom Palette from the menu, the Custom Colours dialogue displays for you to edit your session custom colours.
- **Black on White:** Geometry is printed in black.
- **Legacy Colours:** Geometry is printed using 15 fixed colours supported by NX releases before NX3, and each of the 216 colours in the part colour table is mapped to the most similar of the 15 fixed colours.
- **Colour by Widths:**

**Widths:** On the General Settings tab, use the Widths option menu to specify the line widths that are recorded in CGM files generated for plotting.

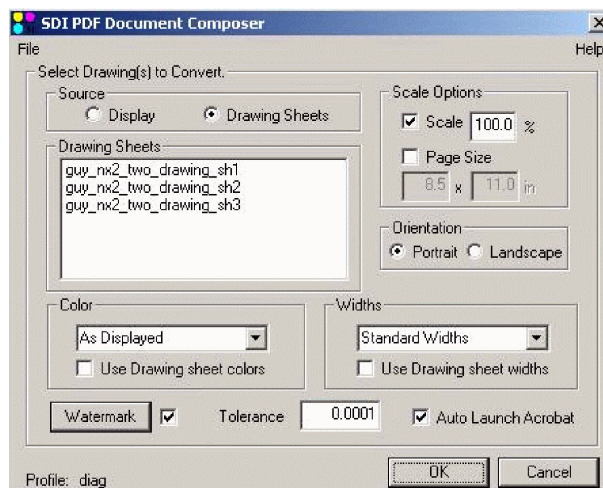
- **Standard Widths:** The system records fixed line widths (for 3 width indices).
- **Single Width:** The system records a single line width for all width indices. You can choose one of the standard widths, one of the custom 3 widths, or a user-defined width.
- **Custom 3 Widths:** The system records custom line widths per width index (for 3 indices).
- **Custom Palette:** The system records custom line widths per color index (for 216 indices).

**Tolerance:** Specify a tolerance value that controls the accuracy or smoothness of curves generated for plotting. Values must be positive. Smaller values produce smoother curves.

- Values smaller than .0001 are automatically reset to the previous value.
- The Tolerance option is an abstract or unit less value (neither inches nor millimetres).

**Auto Launch Acrobat:** Setting this will launch Acrobat if available upon conversion.

**Watermark:** Allows custom watermark to be added.



## Watermark / Stamp configuration

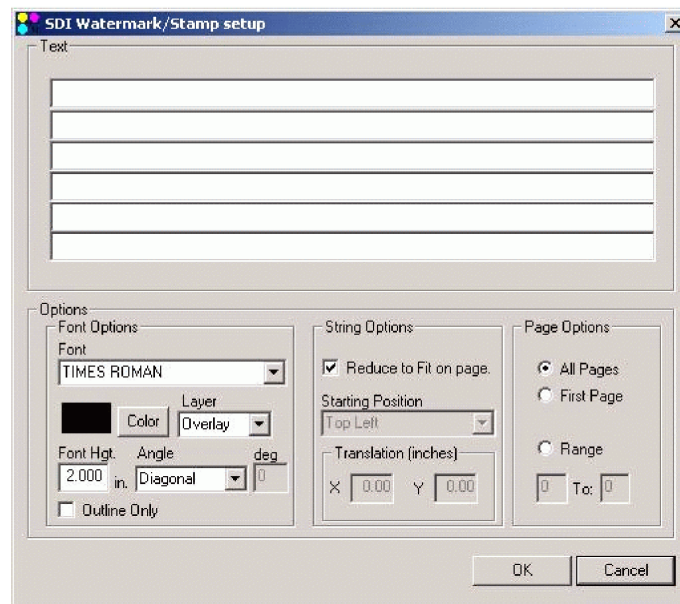
The Watermark/Stamp setup dialogue provides the ability to add text or graphics to the output format

**Text:** If specific text strings are all that is required in the output, they can be added sequentially from the top down.

**Font Options:** Define the font type, colour, height and angle. Because PDF has no transparency capability, it may be desirable to add the watermarking behind existing elements or even make the font outline only.

**String Options:** Provides page alignment and translation option.

**Page Options:** Stamp any or all pages in the output file.



### Specifications:

System requirements: NX3 or higher  
 Operating Environments: MS Windows XP, NT 4.0, 2000  
 Licensing:

Although SDI Document Composer will function without a license, it will run in demo mode resulting in demo watermarking of any output. Licenses can be purchased on-line directly from the user interface. To purchase, ensure you are running the program on the machine you wish to permanently license and initiate purchase via the Help >> Licensing >> Purchase menu from the SDI Document Composer interface. You will be taken to our web site where the functionality and price are explained. Continuing this process will take you to a Verisign Secure Credit Card Transaction site where credit card information is then requested.

For enhanced versions and software maintenance (support and upgrades), please contact our regional offices:

### System Development, Inc. - SDI

SDI - UK  
 7 Tonbridge Chambers, Pembury Rd.  
 Tonbridge, Kent, TN9 2HZ  
 Tel: +44 1732 369988  
 Fax: +44 8700 526967  
 E-mail: sales@sdiuk.com

SDI - USA  
 11111 Richmond Ave.  
 Houston, TX77082  
 Tel: +1 713 266 5667  
 Fax: +1 713 974 4911  
 E-mail: sales@sdicgm.com

